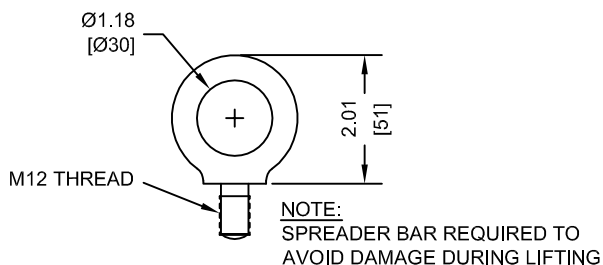


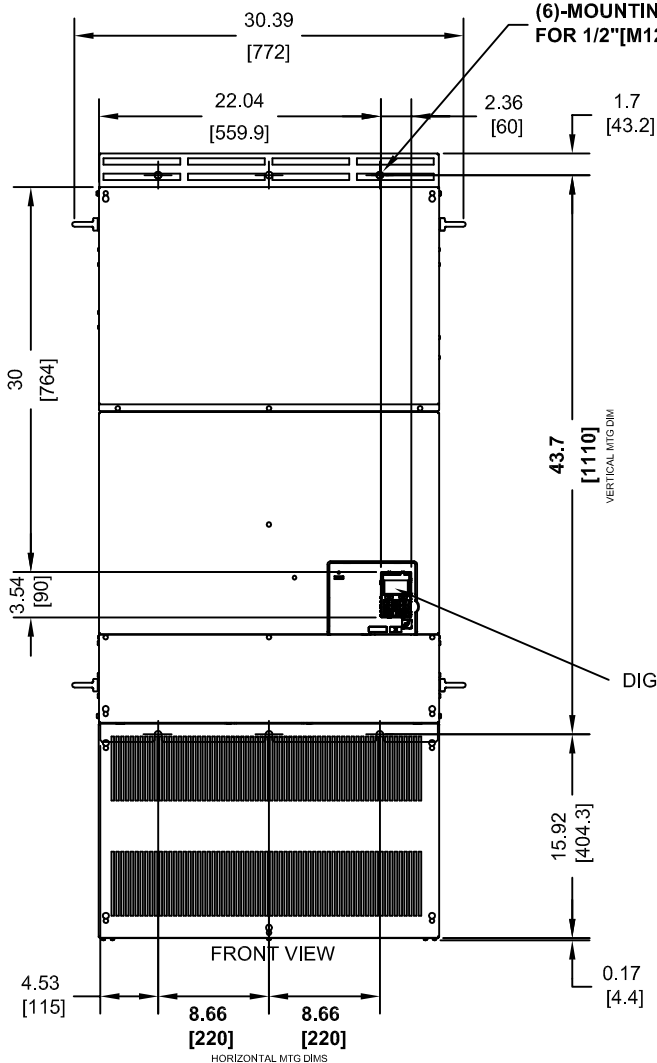
(3) EXTERNAL COOLING FANS



LIFTING AND EYEBOLT DETAILS

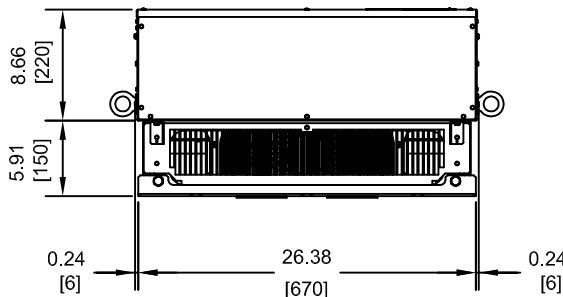
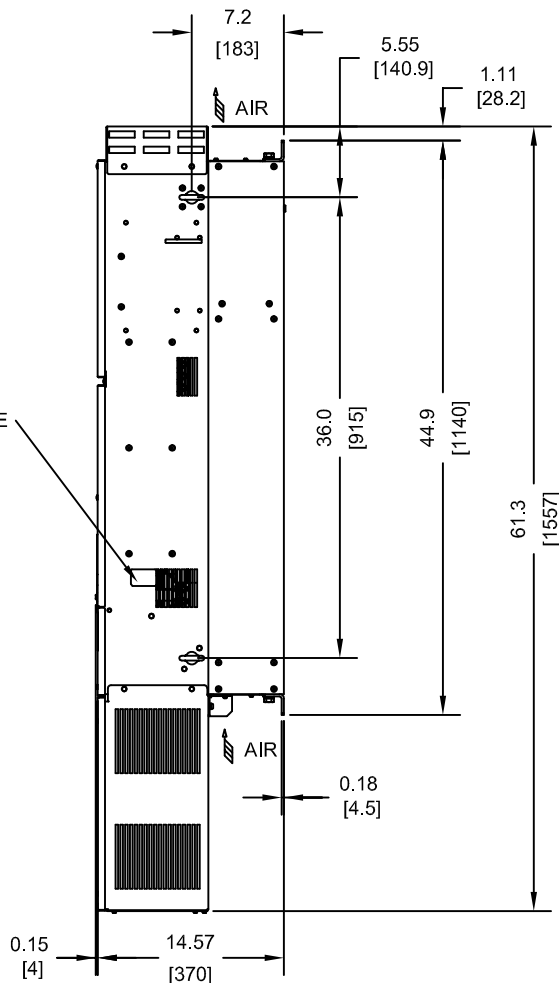


(6)-MOUNTING HOLES FOR 1/2" [M12] SCREWS



NAMEPLATE

DIGITAL OPERATOR



MODEL # CIMR-AU	VOLTAGE THREE-PHASE (VAC)	OUTPUT CURRENT (A)		WEIGHT LBS (Kg)	HEAT LOSS (W)					
					ND (Fc=2kHz)			HD (Fc=2kHz)		
		ND	HD		INT	EXT	TOT	INT	EXT	TOT
4X0515XXX	380/480	515	450	504 (229)	1668	4850	6518	1386	3972	5358
4X0675XXX		675	605	515 (234)	2037	4861	6898	1685	4191	5875

NOTES:
X DENOTES A-Z

INT=INTERNAL COMPONENTS
EXT=EXTERNAL HEATSINK
TOT=TOTAL

FOR ADDITIONAL DETAILS AND SPECIFICATIONS, CONSULT MANUAL

TOLERANCES / REFERENCES:

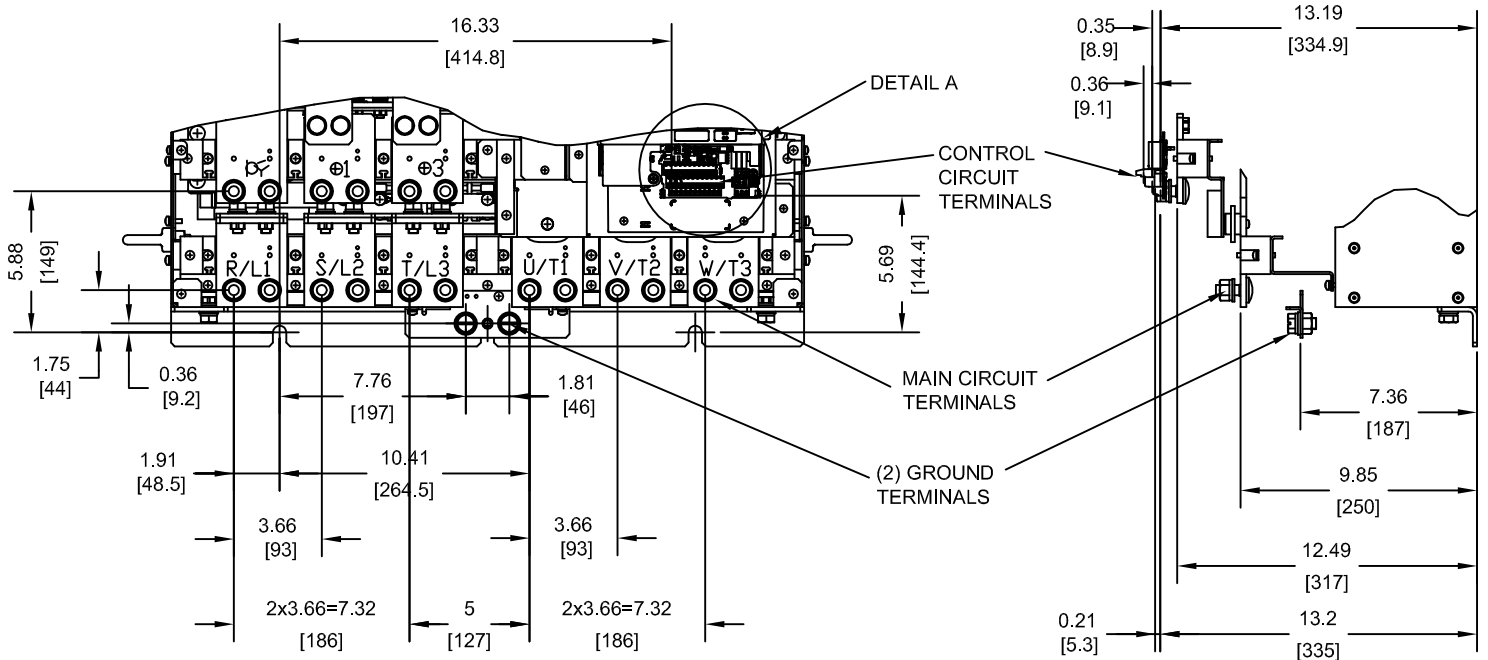


THIS DOCUMENT AND INFORMATION CONTAINED IN IT ARE CONFIDENTIAL, AND CANNOT BE COPIED OR DISCLOSED IN WHOLE OR IN PART WITHOUT THE EXPRESS WRITTEN CONSENT OF YASKAWA AMERICA, INC.

DRAWN: J. MATTAS	DATE 2-3-11	TITLE: A1000 DIMENSION DRAWING		
CHECKED: J. PIOTROWSKI	DATE 7-25-11	FRAME SIZE 14		
TECH: J. SCHULTZ	DATE 7-26-11	NEMA TYPE 1 ENCLOSURE		
APPROVED: J. CAIRO	DATE 11-4-11	SIZE A	REVISION R00	PAGE 1 of 3
ORIGINAL DESIGN: -	DATE -	DRAWING #: DD.A1K.FR14.N1		

UNITS: IN [mm] SCALE: 1:15

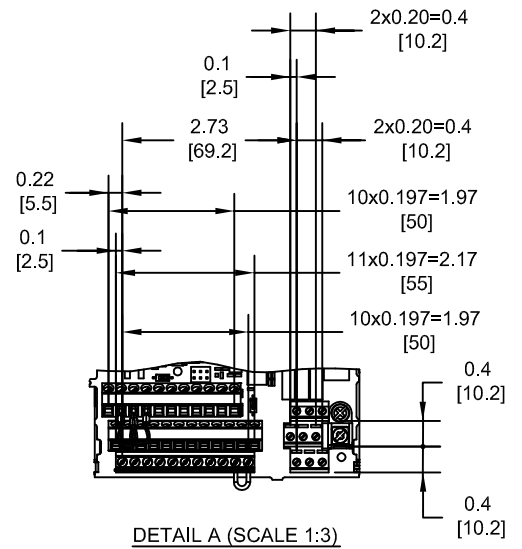
TERMINAL AND WIRING DETAILS (SCALE 1:8)



TERMINAL AND WIRE SPECIFICATIONS FOR MAIN CIRCUIT AND GROUND

MODEL # CIMR-AU	TERMINAL SYMBOL	TERMINAL SCREW	CLAMPING TORQUE lb.in.(N.m.)
4X0515 4X0675	R/L1, S/L2, T/L3	M12	283.2 TO 354.0 (32 TO 40)
	U/T1, V/T2, W/T3		
	⊖, ⊕1	M12	
	⊕3	M12	
	⊕	M12	

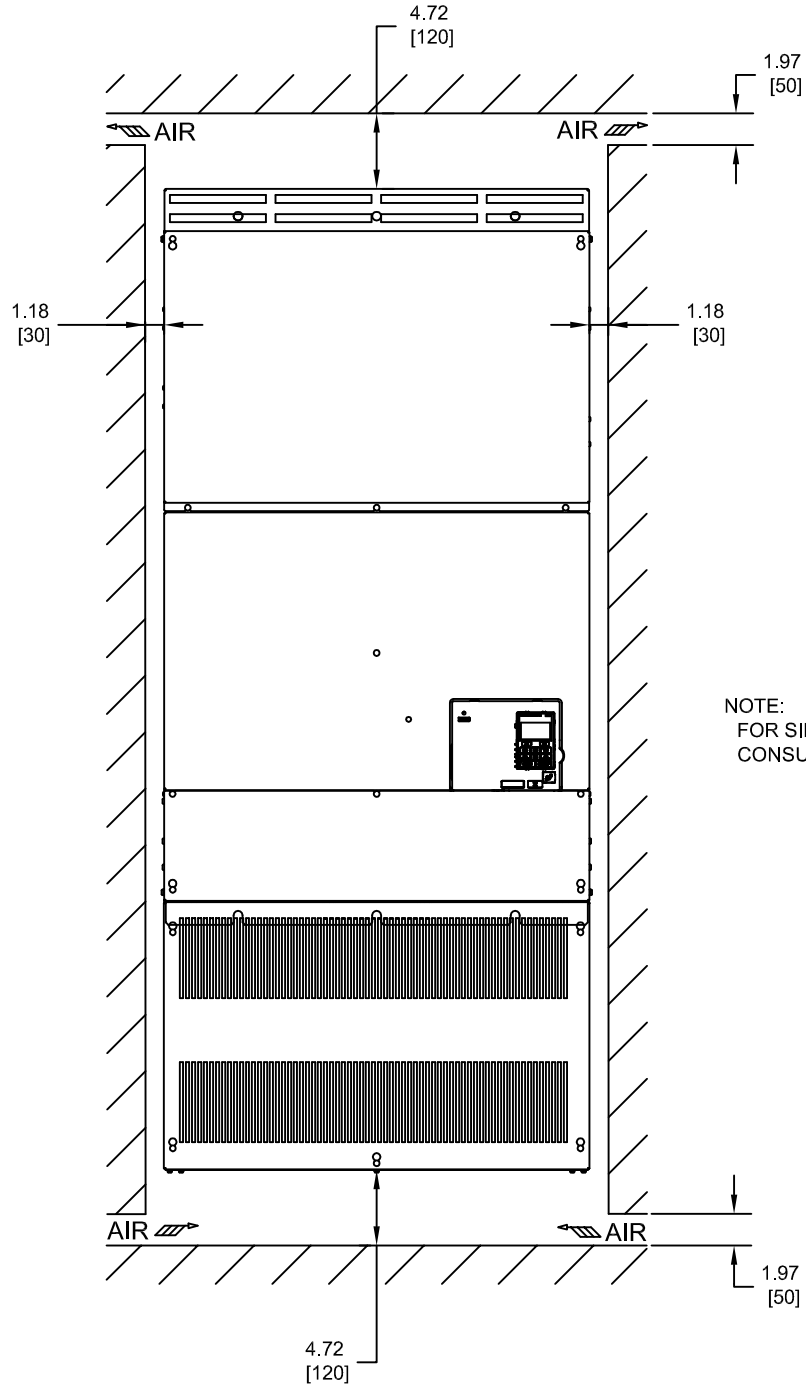
NOTE: REFER TO APPLICABLE CODES FOR PROPER WIRE TYPE AND SIZE



FOR ADDITIONAL DETAILS AND SPECIFICATIONS, CONSULT MANUAL


TOLERANCES / REFERENCES:			DRAWN: J. MATTAS DATE: 2-3-11	TITLE: A1000 DIMENSION DRAWING FRAME SIZE 14 NEMA TYPE 1 ENCLOSURE 4X0515 AND 4X0675		
			CHECKED: J. PIOTROWSKI DATE: 7-25-11	DATE: 7-25-11	REVISION R00	PAGE 2 of 3
		THIS DOCUMENT AND INFORMATION CONTAINED IN IT ARE CONFIDENTIAL, AND CANNOT BE COPIED OR DISCLOSED IN WHOLE OR IN PART WITHOUT THE EXPRESS WRITTEN CONSENT OF YASKAWA AMERICA, INC.	TECH: J. SCHULTZ DATE: 7-26-11	DATE: 7-26-11		
UNITS: IN [mm]	SCALE: BY VIEW	APPROVED: J. CAIRO DATE: 11-4-11	ORIGINAL DESIGN: -	DATE: -	DRAWING #: DD.A1K.FR14.N1	

MINIMUM INSTALLATION CLEARANCES (SCALE 1:12)



NOTE:
FOR SIDE-BY-SIDE MOUNTING
CONSULT MANUAL

FOR ADDITIONAL DETAILS AND SPECIFICATIONS, CONSULT MANUAL

TOLERANCES / REFERENCES:		 THIS DOCUMENT AND INFORMATION CONTAINED IN IT ARE CONFIDENTIAL, AND CANNOT BE COPIED OR DISCLOSED IN WHOLE OR IN PART WITHOUT THE EXPRESS WRITTEN CONSENT OF YASKAWA AMERICA, INC.	DRAWN: J. MATTAS DATE: 2-3-11	TITLE: A1000 DIMENSION DRAWING FRAME SIZE 14 NEMA TYPE 1 ENCLOSURE 4X0515 AND 4X0675	
UNITS: IN [mm]	SCALE: BY VIEW		CHECKED: J. PIOTROWSKI DATE: 7-25-11	TECH: J. SCHULTZ DATE: 7-26-11	SIZE A
		APPROVED: J. CAIRO DATE: 11-4-11	ORIGINAL DESIGN: -	DATE: -	PAGE 3 of 3
		DRAWING #: DD.A1K.FR14.N1			